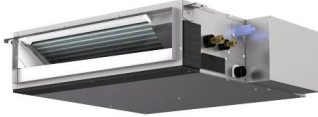


## SUBMITTAL DATA: SEZ-KD12NA4R1

12,000 BTU/H HORIZONTAL-DUCTED INDOOR UNIT FOR MXZ MULTI-ZONE HEAT PUMP SYSTEM

Job Name:	Location:	Date:
Purchaser:	Engineer:	
Submitted to:	For <input type="checkbox"/> Reference <input type="checkbox"/> Approval <input type="checkbox"/> Construction	
System Designation:	Schedule No.:	


**SPECIFICATIONS:**

Rated Capacity*		
Cooling <sup>1</sup>	Btu/h / W	12,000
Heating at 47° F <sup>2</sup>	Btu/h / W	15,000

NOTES: <sup>1</sup>Rating conditions (cooling)-Indoor : D.B. 26.7°C (80°F), W.B. 19.4°C (67°F) Outdoor : D.B. 35°C (95°F), W.B. 23.9°C (75°F)  
 (heating)-Indoor : D.B. 21.1°C (70°F), W.B. 15.6°C (60°F) Outdoor : D.B. 8.3°C (47°F), W.B. 6.1°C (43°F)  
<sup>2</sup>Rating conditions(heating)-Indoor : D.B. 21.1°C (70°F), W.B. 15.6°C (60°F) Outdoor : D.B. -8.3°C (17°F), W.B. -9.4°C (15°F)

For data on specific indoor units (all ducted, all non-ducted, and both ducted and non-ducted) combinations, see the MXZ Technical and Service Manual.

Applications should be restricted to comfort cooling only; equipment cooling applications are not recommended for low ambient temperature conditions.

**ACCESSORIES:**

- Windscreens (ME-FR-15-17)
- External Fan/Heater Control Adapter (PAC-YU25HT-G)
- Cable connector of Remote Sensor (PAC-SA88HA-EP)\*
- \*Allows control of several units with multiple remote control display

**Optional Controls**

- Wireless Controller (MHK1)
- Wired Remote Controller (PAR-40MAA)
- Simple MA Remote Controller (PAC-YT53CRAU-J)
- Thermostat Interface (PAC-US444CN-1)
- System Control Interface (MAC-334IF-E)
- Wireless Remote (PAR-FL32MA-E) (Requires PAR-FA32MA-E)
- Remote Temperature Sensor (PAC-SE41TS-E)

Electrical Power Requirements	208 / 230V, 1-Phase, 60 Hz	
-------------------------------	----------------------------	--

Minimum Circuit Ampacity (MCA) *	A	1.00
----------------------------------	---	------

Blower Motor (ECM)	F.L.A.	0.57
--------------------	--------	------

Blower Motor Output	W	96
---------------------	---	----

Moisture Removal	pt/h	1.9
------------------	------	-----

Field Drainpipe Size O.D.	In.(mm)	1-1/4 (31.75)
---------------------------	---------	---------------

Airflow Rate (Lo - Med - Hi)		
DRY	CFM	247-317-388
WET		222-285-349

Sound Pressure Level (Lo - Med - Hi)		
Cooling	dB(A)	23-28-33

External Dimensions (H x W x D)	In.(mm)	7-7/8 x 39 x 27-9/16 (200 x 990 x 700)
---------------------------------	---------	---

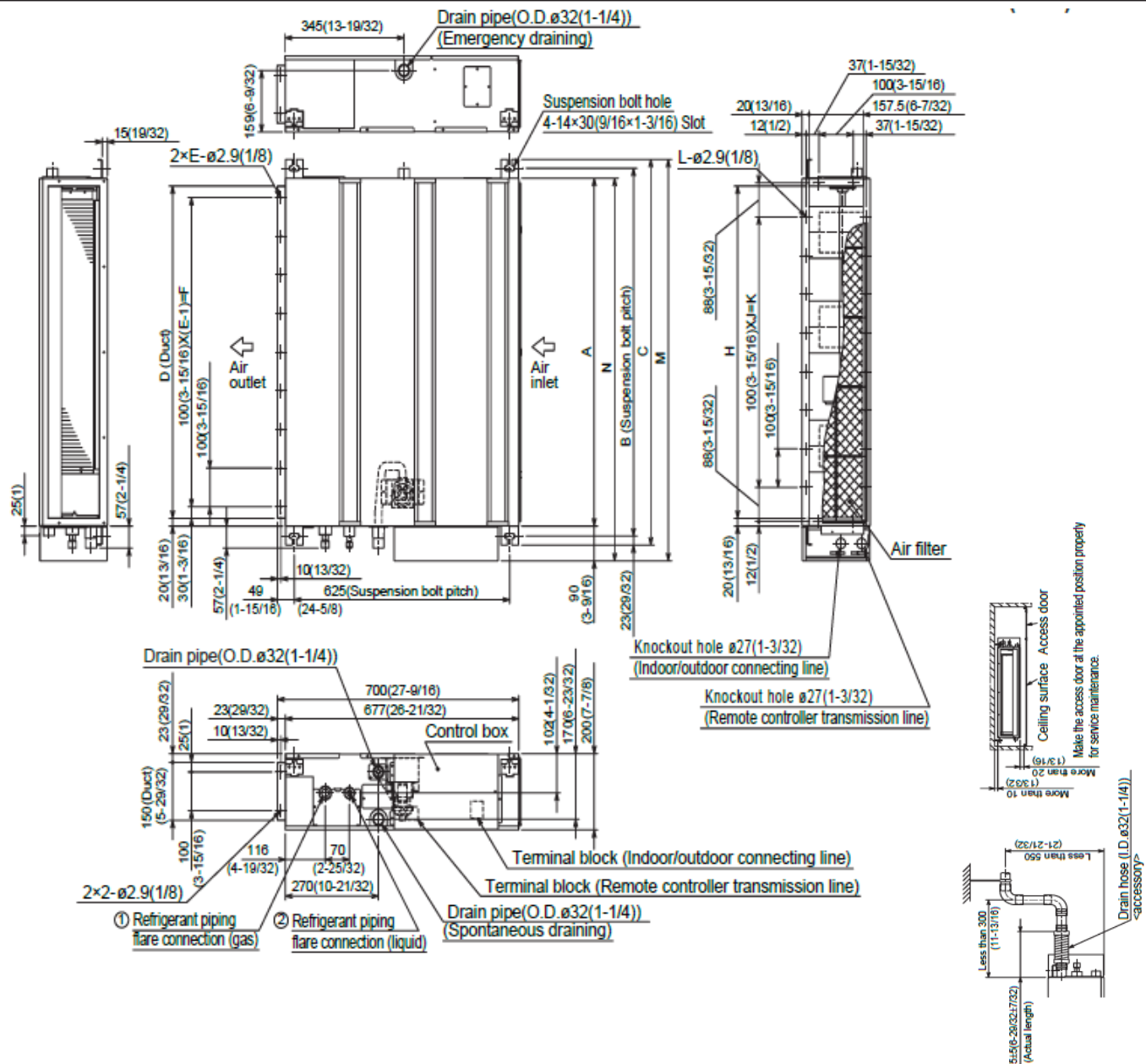
Net Weight	Lbs.(kg)	50 (22.7)
------------	----------	-----------

External Finish	Galvanized-steel Sheets	
-----------------	-------------------------	--

Refrigerant Piping (Flared)		
Liquid (High Pressure)	In.(mm)	1/4 (6.35)
Gas (Low Pressure)		3/8 (9.52)

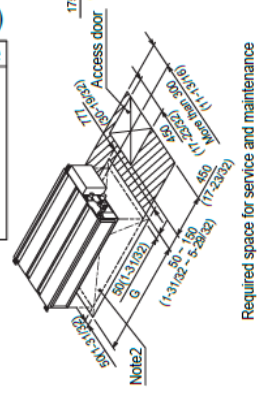
# DIMENSIONS: SEZ-KD12NA4R1

Unit:mm(in.)



Sizes	mm (in.)														mm (in.)	
	A	B	C	D	E	F	G	H	J	K	L	M	N	① Gas pipe	② Liquid pipe	
09 kBtu/h	700 (27-9/16)	752 (29-5/8)	798 (31-7/16)	660 (26)	7	600 (23-5/8)	800 (31-1/2)	660 (26)	5	500 (19-11/16)	16	839 (33-1/16)	790 (31-1/8)	ø9.52(3/8)	ø6.35(1/4)	
12 kBtu/h	900 (35-7/16)	952 (37-1/2)	998 (39-5/16)	860 (33-7/8)	9	800 (31-1/2)	1000 (39-3/8)	860 (33-7/8)	7	700 (27-9/16)	20	1039 (40-29/32)	990 (39)			
15 kBtu/h	1100 (43-5/16)	1152 (45-3/8)	1198 (47-3/16)	1060 (41-3/4)	11	1000 (39-3/8)	1200 (47-1/4)	1060 (41-3/4)	9	900 (35-7/16)	24	1239 (48-25/32)	1190 (46-7/8)			
18 kBtu/h																

- Note 1.** Use M10 screw for the suspension bolt (field supply).
- 2.** Keep the service space for the maintenance at the bottom.
- 3.** This chart indicates for size 15 kBtu/h model, which has 3 fans.  
 Sizes 09, 12 kBtu/h models have 2 fans.  
 Sizes 08 kBtu/h model has 4 fans.
- 4.** When an inlet duct is used, remove the air filter (supply with the unit), then install the filter (field supply) at suction side.



Required space for service and maintenance

Should this document be altered or changed without MESCA's permission, it becomes null and void. MESCA assumes no responsibility for any consequences in such cases.

